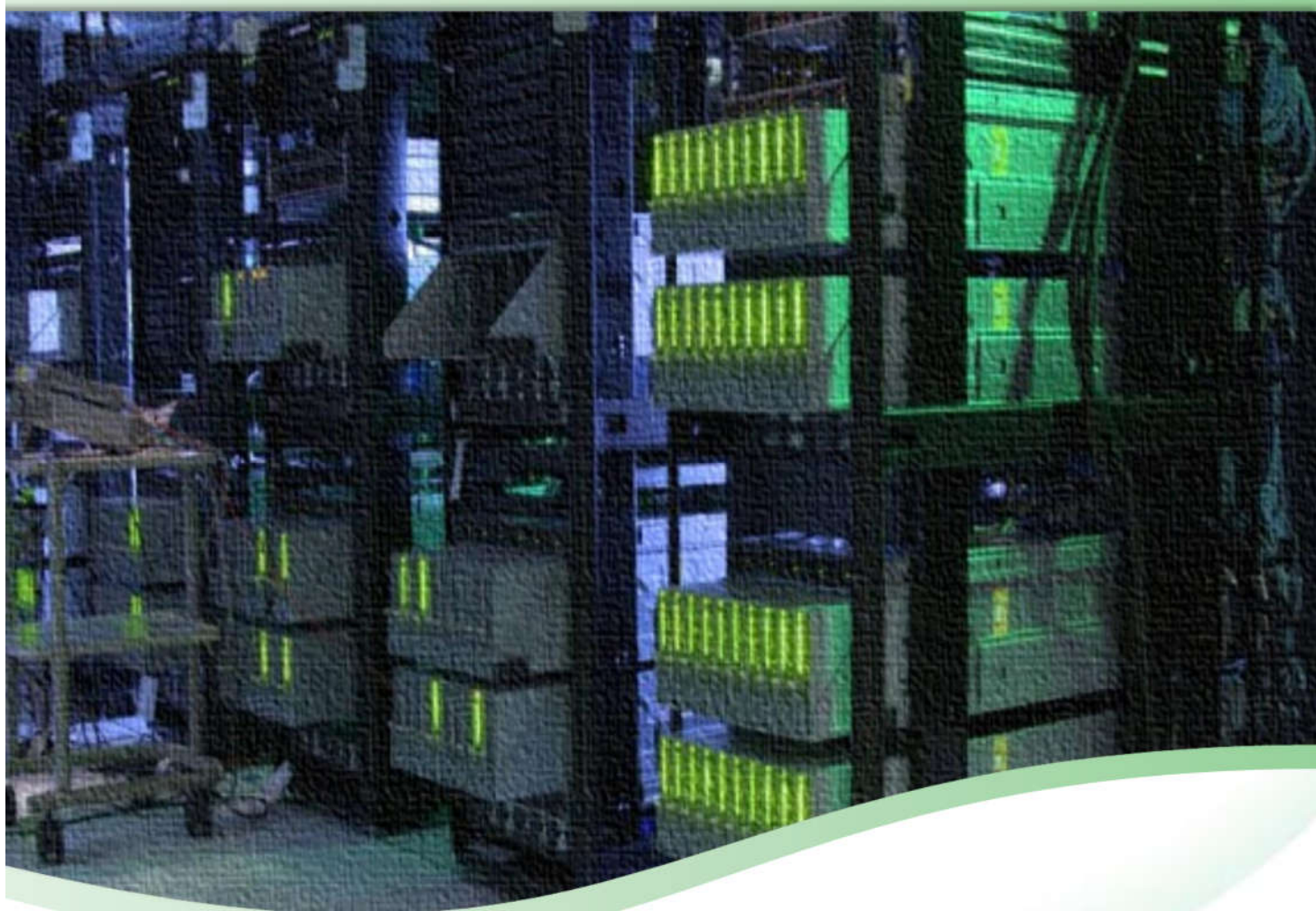


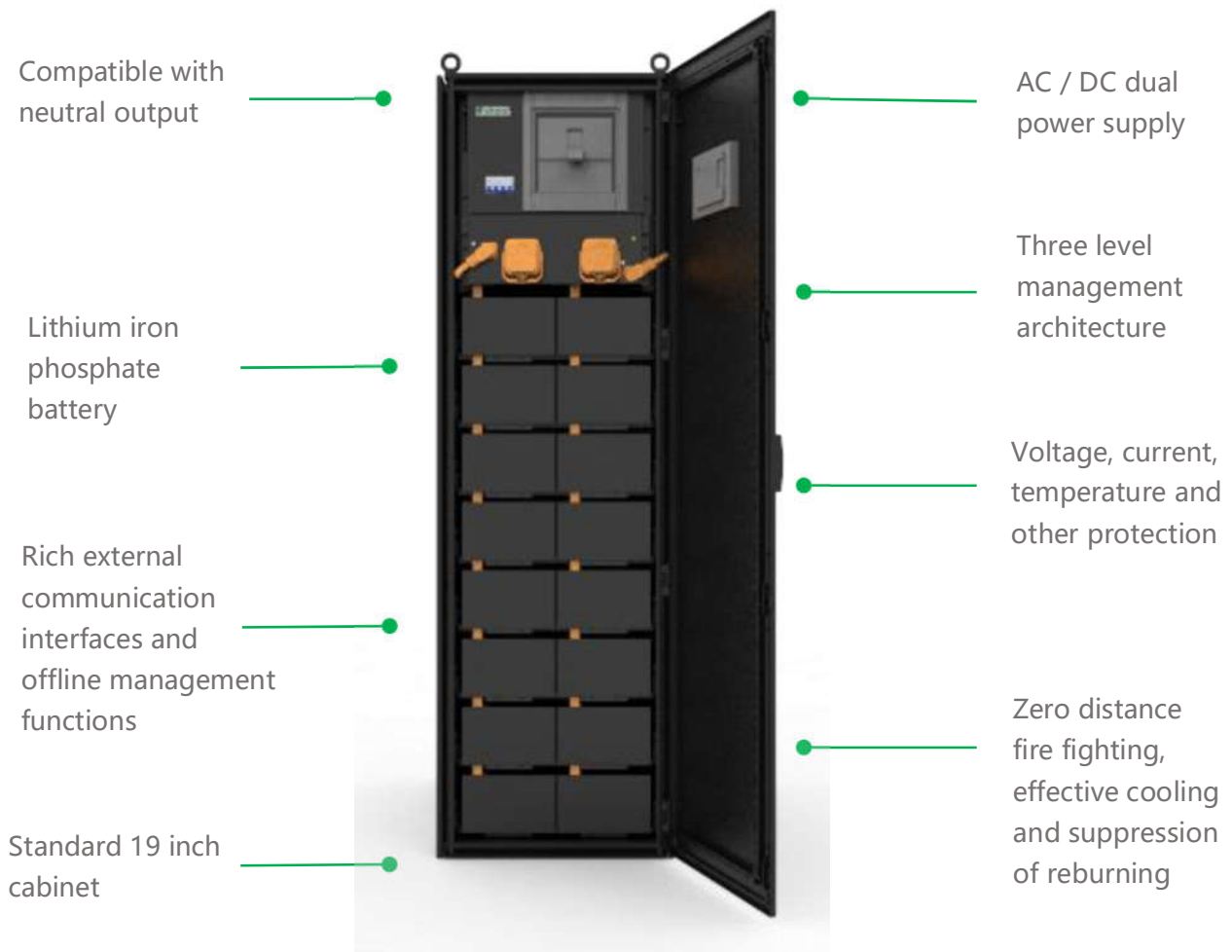
# SHVP lithium battery for IDC

SHVP series

Data center green and low-carbon energy practitioner



## Characteristics and value \*

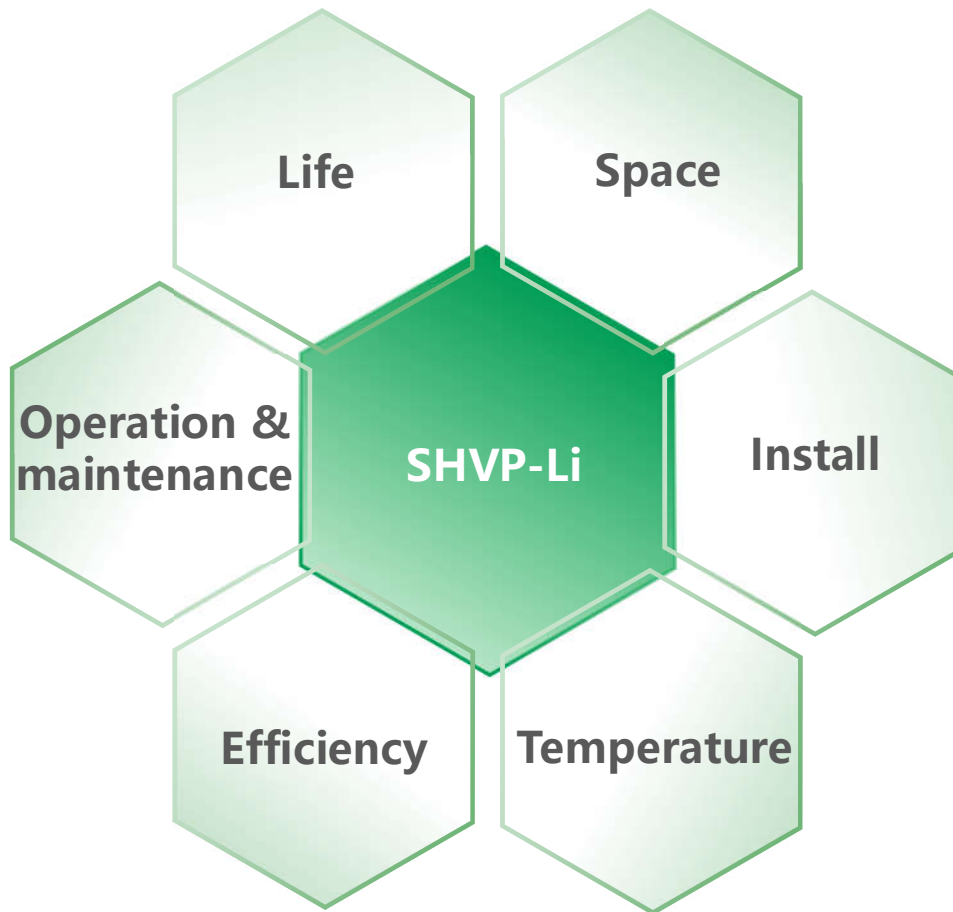


High safety and reliable lithium iron phosphate battery cell is adopted, which has high-tech products of integration, miniaturization, lightness, intelligence, energy conservation and environmental protection. Centralized monitoring, convenient maintenance, unattended and standardized cabinet installation are adopted.

Through modular design and flexible configuration, it covers the DC voltage range of 192v ~ 512v, the power range of 10kW ~ 800KW and the standby power demand of 10 ~ 60 minutes. It can be used as backup power supply in communication core machine room, UPS host room, Internet Data Center (IDC), edge data center, data information port, DC remote power supply, traffic dispatching center, intelligent manufacturing and other fields.

- lithium battery products of Shuangdeng data center can be used for supporting HVDC, Panama power supply, UPS, etc

## Characteristics and value \*



- Better cycle life and calendar life
- Level III BMS, support status self inspection
- 30% lead acid in weight and space
- Intermittent charging, floating charge free
- Minimal installation, 30% fewer nodes
- Support wide temperature range of 15 ~ 35 °C



- Lithium battery products of Shuangdeng data center can be used for supporting HVDC, Panama power supply, UPS, etc


# Technical parameters of battery system\*\*

Model	SHVP512160C01	SHVP512240C01
Appearance		
Rated voltage	512Vdc	
Rated capacity	160Ah	240Ah
Rated energy	81.9kWh (1C)	122.88kWh (1C)
Operating voltage range	400~576Vdc	
Rated charging voltage	576Vdc	
Charging current	0.5C, Maximum 2C charge	
Maximum continuous discharge power	200kW	400kW
Communication interface	RS485, can, dry contact, Ethernet port	
Battery module type	64V80Ah (2P20S)	
Cluster composition	64V80Ah (2P20S) x 8pcs	
System composition	Cluster 512V80AH x 2	Cluster 512V80AH x 3
Size	600×1000×2000mm	1200×1000×2000mm
Weight	≈ 1450kg	≈ 2175kg
Parallel number	Maximum 16 cabinets in parallel	

# Technical parameters of battery system\*\*

Model	SHVP512160C01/SHVP512240C01
Working temperature	0~45°C
Storage temperature	-20~55°C
Altitude	0~4000m, above 1000m, derating according to EN/IEC 62040-3
Humidity	5%~95%RH
Compatible device	Panama power supply, HVDC, UPS, DC power supply, etc
Protection function	Over voltage, over temperature, under voltage, under temperature, etc
Communication protocol	Modbus TCP/RTU, CAN2.0B
Fire fighting system-Level 1	Perfluorohexanone

# Battery module technical parameters

Battery module	64V80Ah
Appearance	
Cell	LFP-40Ah
Rated voltage	64V
Rated capacity	80Ah
Rated energy	5.1kWh
Module type	2P20S
Maximum continuous discharge power	25.6kW
Size wide × deep × high	245×890×155mm
Weight	≈ 53.6kg

Based on high safety and reliability cell



IEC62619

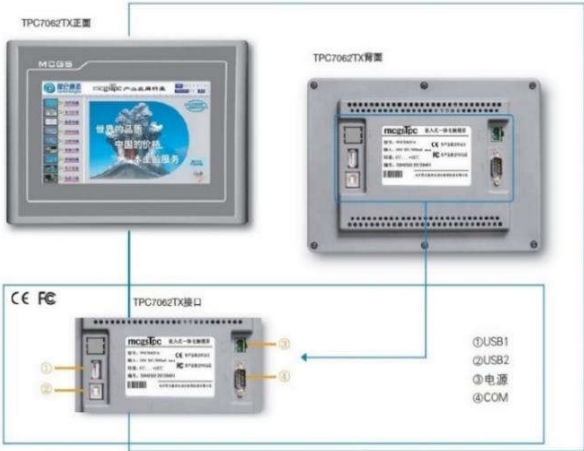



UL1973

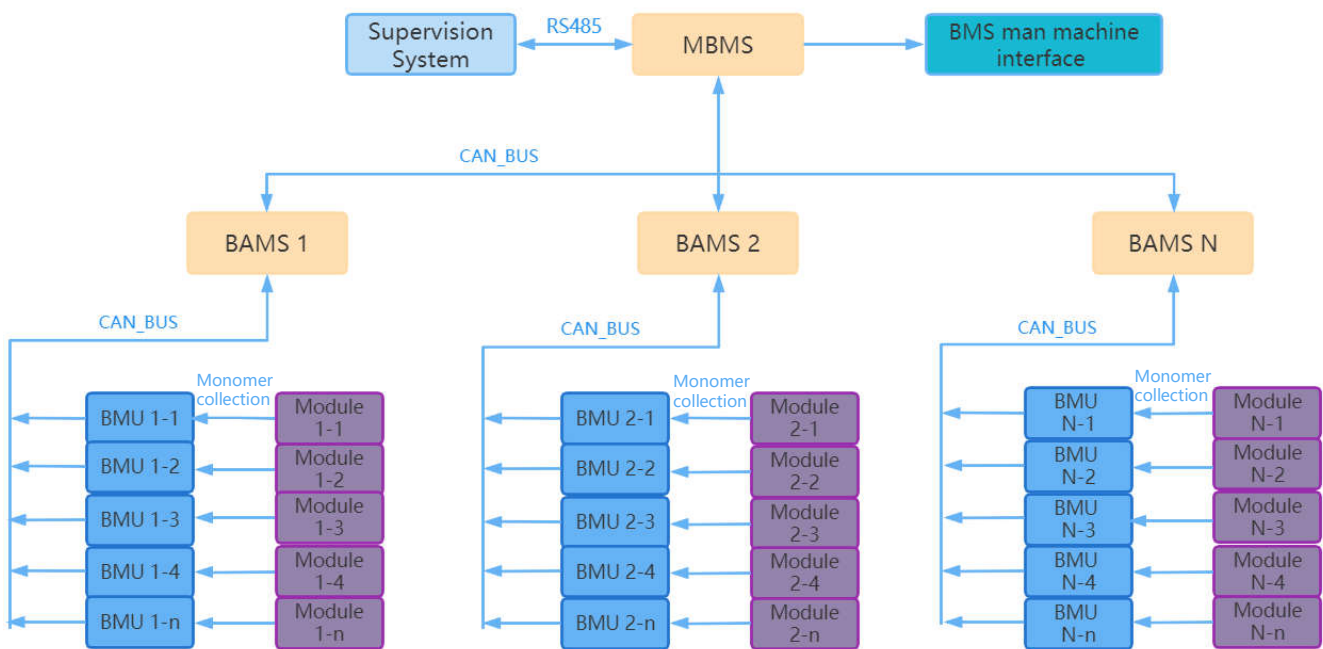
\*\*The battery module is compatible with 15s and 16S designs



# Options

Options	Introduction	Picture
<p><b>Industrial control panel</b></p>	<ul style="list-style-type: none"> <li>● The industrial control screen is a visual operating system. Users can obtain the voltage, current, temperature, SOC and SOH status of the battery system through the screen. Provide real-time monitoring view</li> <li>● Support touch operation to manage the setting parameters of the battery</li> <li>● Support viewing and alarm management</li> </ul>	
<p><b>Confluence system</b></p>	<ul style="list-style-type: none"> <li>● The confluence system is a multi cluster power parallel management system. Users can realize the parallel management of multiple battery clusters through the confluence system, and realize the electrical control of the parallel system at the same time</li> </ul>	<p>/</p>
<p><b>Fire fighting system</b></p>	<ul style="list-style-type: none"> <li>● The fire protection system in the cabinet includes detectors</li> </ul>	

# System structure



The system is configured by combining cabinet + battery cabinet.

\*\*Statement:

This information is only a brief description of the product performance and does not mean that it is a guarantee for any battery. The relevant parameters of the battery can be modified without notice. Please keep in touch with Shuangdeng in time to obtain the latest information.